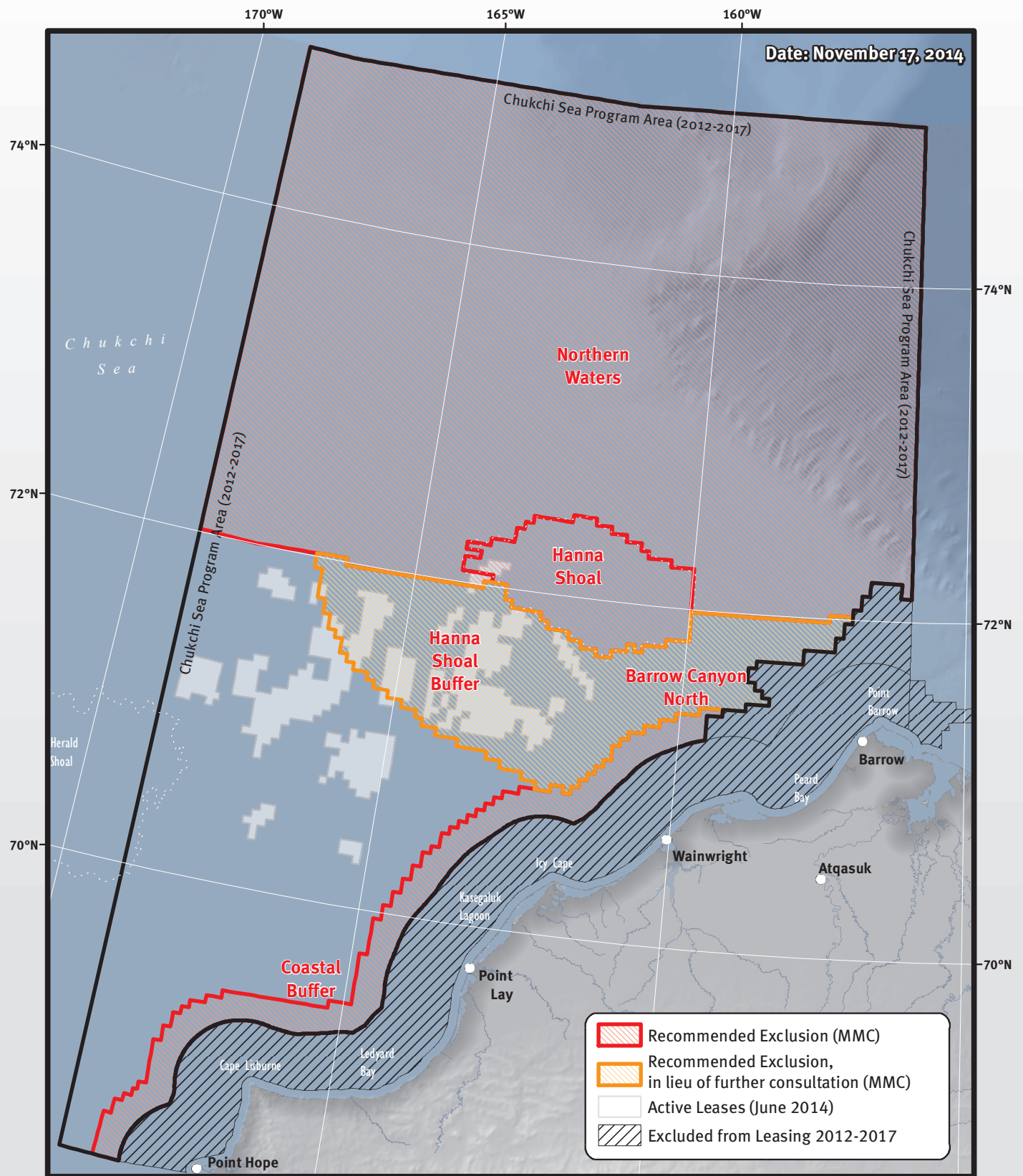


Marine Mammal Commission: Recommended Exclusion Areas



The Commission recommends that BOEM exclude from Lease Sale 237 the following areas:

- 1) an expanded coastal buffer zone from 46 km (25 nmi) to at least 64 km (35 nmi);
- 2) Hanna Shoal, with a boundary defined by the 40-m isobath;
- 3) a suggested* 50-nmi buffer zone beyond the Hanna Shoal 40-m isobath;
- 4) an extension of the coastal buffer zone off Barrow to encompass Barrow Canyon*;
- 5) all waters north of 72 degrees N latitude.

* The exact boundaries of the Hanna Shoal and Barrow Canyon buffer zones should be determined in consultation with appropriate experts.

